

BOARD OF DIRECTORS

New Board Members Receive District Orientation

Meeting for the first time since this summer's Florida-Georgia Convention, the District Board of Directors gathered at Canterbury Retreat Center in Oviedo last month.

District President Gerhard Michael Jr. led opening devotions based on Romans 12. Michael said God is "calling on board members to use their individual gifts so that collectively we contribute to doing the will of God."

This board meeting was designed as an orientation session for the Board, which includes seven first-time members as well as returning incumbents.

Treasurer Jim Ingersoll was returned to that position by acclamation. Rev. Jim Guelzow was unanimously elected to serve as chairman of the board.

The District's executive committee will be comprised of President Michael, treasurer Ingersoll, Chairman of the Board Guelzow, layperson Bill Arndt of Region 1 and Rev. Dennis Glick, first vice president.

David Wilkosz of Region 2 was elected to serve as assistant secretary.

District executives provided overviews of the ministry areas under their leadership over the two-day session. Discussion focused on the District's critical target areas, outlined below.

Church Leaders

Responding to a District request, Lutheran Church-Missouri Synod President Gerald

Kieschnick granted exceptional status to the Northeast Georgia, Atlanta South, Tallahassee and Heartland Circuits. That status was denied to the Miami North and South Circuits. Florida-Georgia will have 21 electoral circuits at the 2007 LCMS Convention.

The District will celebrate its 60th anniversary in 2008. "The staff has begun discussions of how this event might strengthen our partnership in God's mission as we celebrate the past and look to the future," President Michael said.

Funding the Mission

The Stewardship Advisory Council has launched an intentional visitation program to challenge key leaders of District congregations to "step up support of our common work as a District and Synod." Council members will visit select congregations this fall.

Rev. Bob Besalski continues his efforts with the *Forward Together - Servants in His Mission* campaign. The goal remains \$10 million to support mission and outreach in the District.

Lutheran Schools

with more District schools growing it was necessary to train additional consultants and team captains. In May, five individuals were trained to lead the new free-standing early childhood accreditation process.

The District's partnership with Lutheran Special Education Ministries is developing. LSEM is working with at least 10 District

schools to provide services to special-needs children.

Human Care

The newly formed Advisory Council for Senior Adult Ministry met for the second time at the District office in August to establish strategies and plans for assessing and encouraging the involvement of congregations in ministry to, with and for senior adults (ages 50 and older).

Multi-Cultural Outreach

Florida-Georgia is continuing its long-standing relationship with the deaf community in the Miami/Fort Lauderdale and St. Petersburg

areas. Pastor Hank Drummond of Concordia-Kendall is serving the South Florida deaf community but is unable to cover the St. Petersburg. District Executive for Outreach Doug Kalleesen is exploring options to best serve the west side of the state.

A convention resolution extended for five years the District's partnership with the LCMS World Mission Board in the area of Southeast Asia/Thailand. The Thailand Evangelical Mission Partnership (TEMP) committee met in August and made plans to send a team of short-term volunteer missionaries within 12 months. Kara Eichinger, whose husband Erich is associate pastor at Faith-Eustis, FL, and a

former missionary to China, is volunteer coordinator.

Spiritual Maturity

The Futures Committee — appointed by President Michael to help the District determine how to move into the future "honoring the legacy of the Woodlands . . . moving us to another level of service and performance," met in August for the first time. Rev. John Roth is chairing this committee.

LCMS National Youth Gathering planners have been meeting regularly in Orlando to finalize details for the July 28-August 1, 2007 event to be held at the Orlando Convention Center. □



Attending the September meeting were (front, l-r) Jim Guelzow, Region 3; Diana Geiger, Region 4; Jim Ingersoll, treasurer; Jean Gillis, minister of religion-commissioned; Gary Tocklin, Region 3; Frank Marshall, Region 1; Nancy Volz, Region 4; Roger Walker, minister of religion-commissioned; Richard Neubauer, LCEF and Administration; Bill Gaik, Region 1; (back, l-r) Gerhard Michael, President; Mark Brink, School Ministries; Dennis Glick, First VP; Pat Heffernan, Region 3; Sandra Thiele, Region 2; Dave Weidner, Congregational Services; Pat O'Brien, Secretary; Dean Pfeffer, Region 2; Greg Walton, Second VP; Jim Essig, minister of religion-commissioned; Henry Drummond, Region 4; Doug Kalleesen, Outreach; Bill Arndt, Region 1; David Wilkosz, Region 2; Wayne Wilke, Concordia House of Studies; Dennis Esch, LCMS Foundation.

Serving Lutherans for more than 50 years!

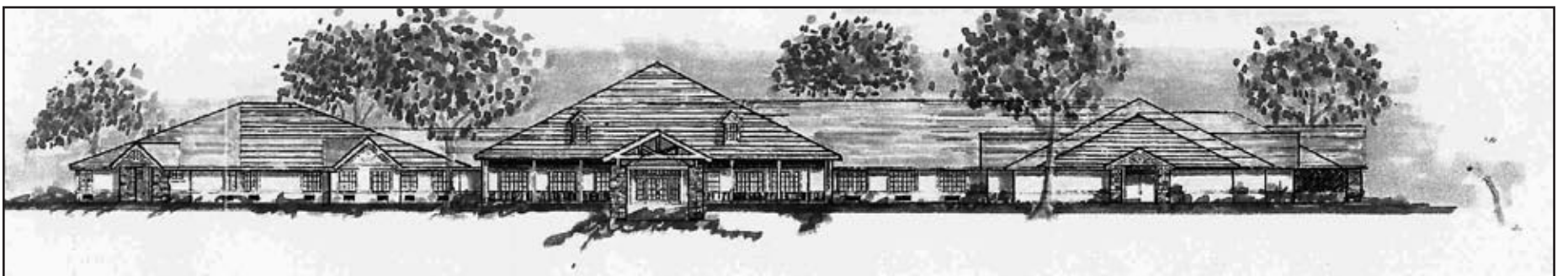
Discover Lutheran Haven

Where more than half the residents hail from Florida-Georgia District Congregations. You might meet some old friends there, and for sure, will make some new ones.

- Independent Living
- Assisted Living
- Nursing Home Care
- Respite Care



Affiliated with the SELC District of the Lutheran Church Missouri Synod, Lutheran Haven has been a provider of retirement services for more than 50 years.



1 and 2 bedroom rentals available



For more information, please call or write:
Mrs. P.J. Summersgill • Lutheran Haven
2041 West State Road 426 • Oviedo, FL 32765
(407) 365-2224 Toll Free (800) 272-5676